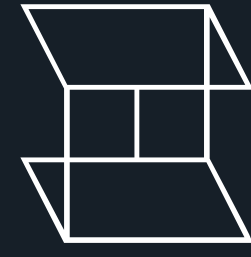


Floor plans

Smith

6-bed



**HAPI
HOMES**



6-bed

Smith

Floor plans

Total Construction
1980 sq. ft.

First Floor
908 Sq. ft

Living Area
148 sq. ft.

Bedroom 01
128 sq. ft.

Bedroom 03
128 sq. ft.

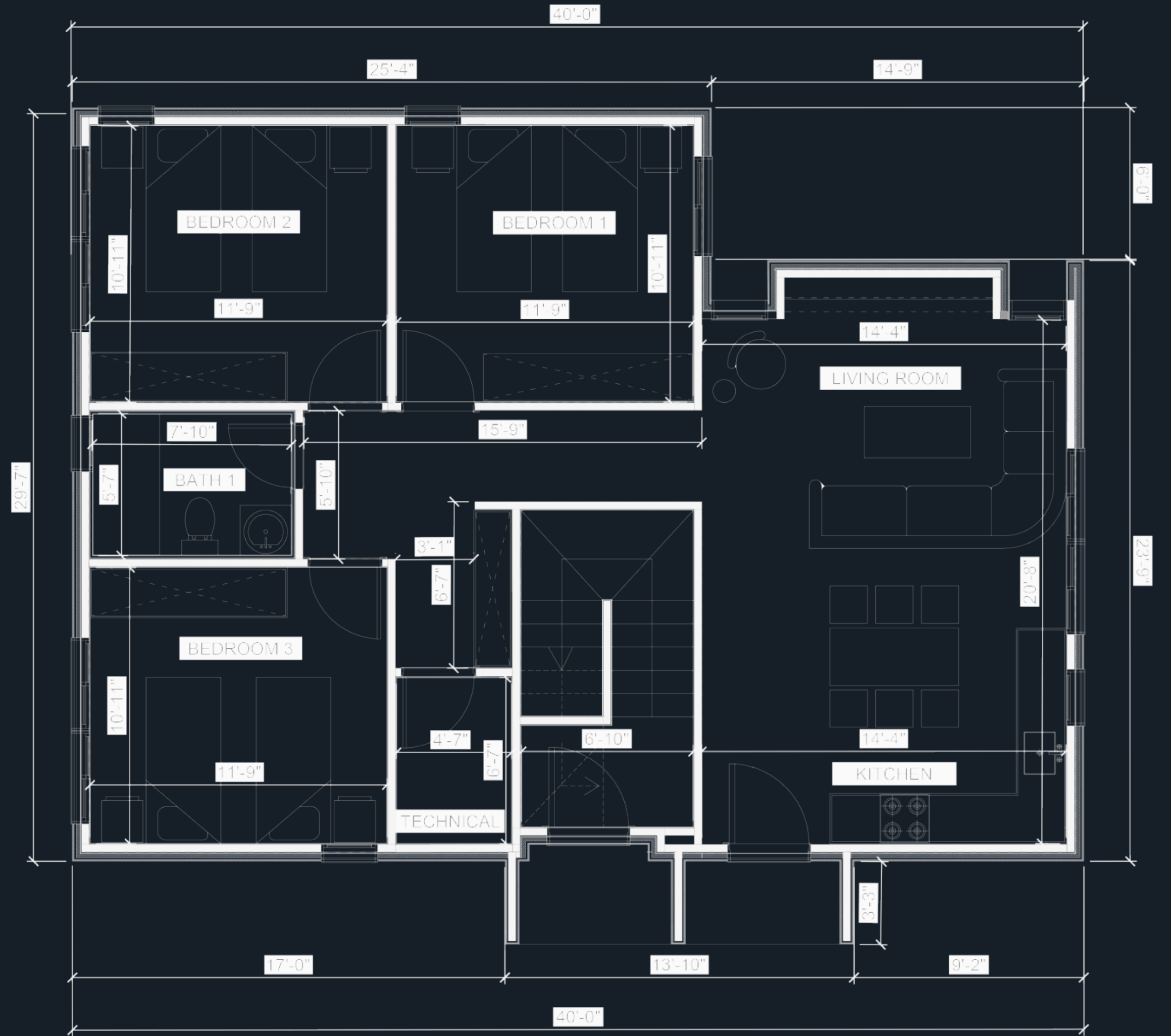
Technical Room
30 sq. ft.

Total Livable
1840 sq. ft.

Kitchen Area
161 sq. ft.

Bedroom 02
128 sq. ft.

Bathroom 01
47 sq. ft.



6-bed

Second Floor
995 Sq. ft

Living Area
148 sq. ft.

Kitchen Area
161 sq. ft.

Bedroom 04
128 sq. ft.

Bedroom 05
128 sq. ft.

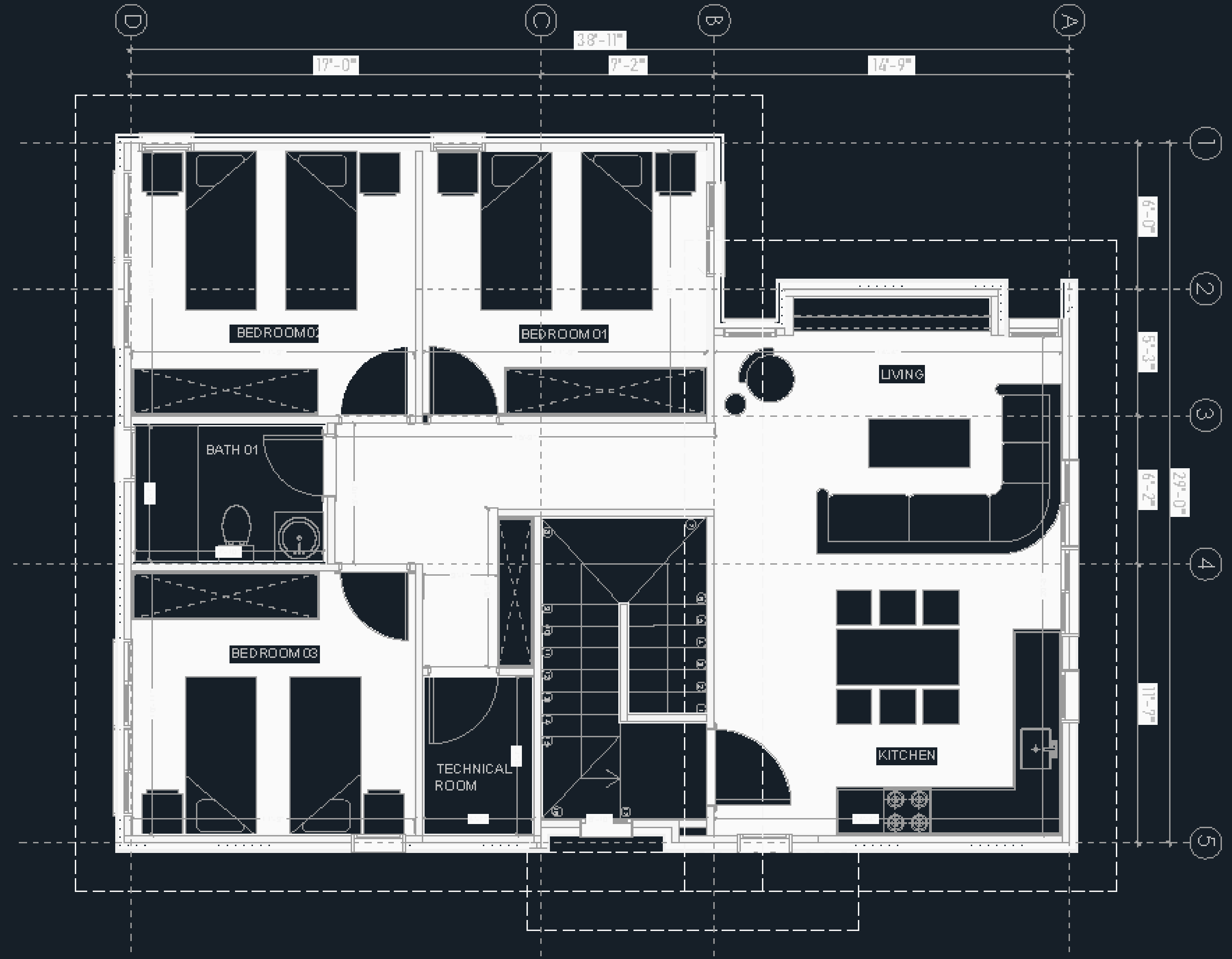
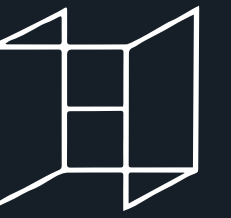
Bedroom 06
128 sq. ft.

Bathroom 01
47 sq. ft.

Technical Room
30 sq. ft.

Smith

Floor plans



Floor plans

Smith

6-bed

@yourhapihome

www.hapihomes.com

